

# Plan, Migrate, Secure

Bringing cloud computing to you

The migration from in-house systems and services to externally located, cloud-hosted capacity can lead to a significant reduction in day-to-day overheads. Furthermore, users can work more collaboratively and flexibly – when and how they want, at any time, on any device. And Bring Your Own Device (BYOD) gives everyone the ability to use a familiar device to achieve increased levels of productivity.

With the advent of cloud-enabled storage, data sharing and mobile computing, companies and organisations can be more efficient, flexible and innovative. This is no longer cutting-edge but tried and trusted technology. However, the groundwork for migration has to be based on relevant, up-to-date information and, to fully capitalise on a cloud-enabled strategy, concerns about data security and unauthorised access have to be addressed.

## Consultancy Services

23Technology's consultancy services fully prepare for and manage the process of migration from in-house to cloud or virtualised IT systems. Using structured transition steps – Plan, Migrate, Secure – 23Technology can accelerate the process of moving to the cloud by:

- Virtualising business-critical applications in advance
- Minimising the likelihood of downtime during migration
- Ensuring data is fully secured when hosted in the cloud



## Plan

23Technology provide an in-depth range of desktop and application evaluation services giving practical advice and guidance so companies and organisations understand the appropriate cloud and virtualisation options available.

The Cloud Migration Assessment explains the most relevant options open to an organisation and suggests solutions to satisfy users' needs for mobility and flexibility, within budgetary constraints. To ensure each application will run on the new operating system, 23Technology's Application Compatibility Assessment will accurately assess the work and cost involved in preparing applications, both standard and bespoke, for a new environment.

## Migrate

23Technology's approach to cloud and virtualisation is different – migration of applications is completed first, followed by the shared data volumes and, finally, end-users. This running order allows the most critical line of business functions to be dealt with first, well before the more straight forward session delivery and user-level needs.

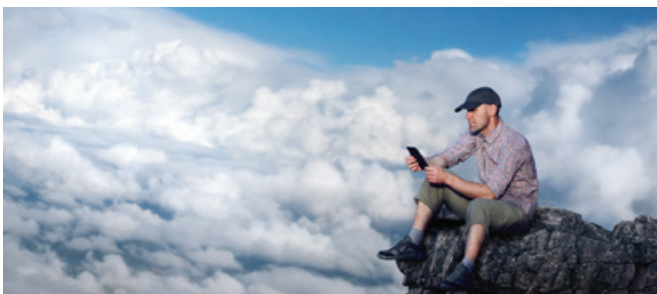
The Cloud Fast Track service from 23Technology is the quickest way to cloud-enable both familiar programmes such as Microsoft Exchange, Office Suite, SharePoint, and specialist business applications. During a migration, companies and organisations can save on overheads by provisioning legacy PCs as thin-clients, allowing seamless connectivity to a cloud-based or virtualised desktop. To maximise the effectiveness of mobile and BYOD working in any location, large or small, 23Technology plan wireless access points, implement network security measures and develop an Acceptable Use Policy.

## Secure

Backup services must be proven, reliable and offer ultra-fast performance. 23Technology help with the choice of an easy, automated backup system so companies and organisations can retain on-site control but still have the added assurance of off-site cloud storage options.

To comply with data protection and other legislation regarding data location, access, integrity and security, 23Technology's Cloud App Analysis identifies all the cloud services accessed by users on a network. It enables further action to block applications that pose a risk of unauthorised access to corporate data, possible data leakage and other security concerns.

With many users connecting to a network on three or four different devices, it can be a challenge to track permissions, provisioning and access. Implementing identity management improves security. Through single sign-on, users can be allowed simple yet secure access to thousands of programs and apps, including Office 365.



## Talk to us

Reading: 0118 902 6445

London: 0203 195 2993

[info@23technology.com](mailto:info@23technology.com)

SUPPORT • CLOUD • PLAN • MIGRATE • SECURE

23 Technology Ltd, Merlin House, Brunel Road, Theale, Reading RG7 4AB • [www.23technology.com](http://www.23technology.com) • Registered in England No. 8111463